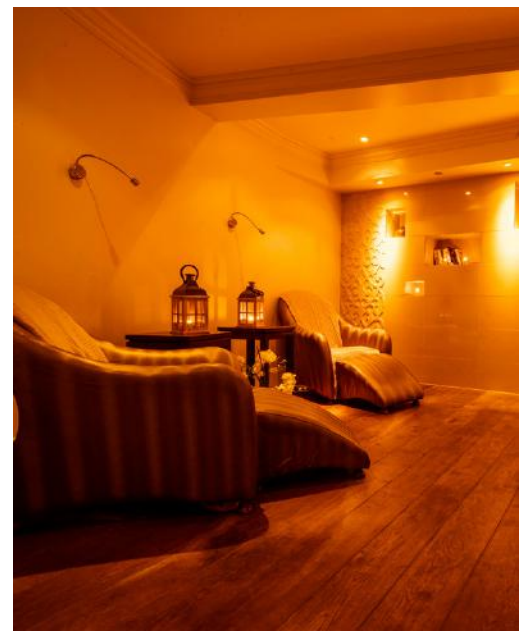




Ellenborough Park Spa



Escape and unwind in our luxury Cheltenham spa

We pride ourselves on being an exclusive and intimate spa that allows you to escape and unwind. A historical building surrounded in nature, let our luxurious Spa whisk you away to another world. Our bespoke treatments offer indulgent Elemis products to match every skin type.

The Indoor Spa Facilities include a Jacuzzi, Sauna and Steam Room. Our Outdoor Pool is fully heated all year round, so be brave and take a dip!

Step into our Relaxation Room after your treatment to be encapsulated in a candle lit room, complete with calming loungers. This is the perfect place to unwind after your treatment, allowing your body and mind to rebalance.

ELEMIS Face - Touch

All treatments 25 minutes £65 / 55 minutes £95

Superfood Pro Radiance

Rich in superfoods, essential minerals and trace elements, this will give tired and exhausted skin a jump start. Skin is left smoother, plumper, stress free and luminously radiant.

Dynamic Resurfacing

This highly potent couture resurfacing treatment targets the signs of ageing and dull, tired, uneven skin tone. This pioneering precision layering protocol uses three layers of enzymes to nibble the dead skin away, revealing extraordinary results.

Pro-Collagen Age Defy

Tackle fine lines and wrinkles and help support the cellular structure of the skin, visibly improving elasticity for beautifully nourished younger looking skin.

Pro-Definition Lift & Contour

Powered by breakthrough technology targeting sagging jowls, cheeks and jawlines, this facial helps restore the architecture of the face. The structure of the skin is boosted through a unique deep, muscle toning massage from the scalp to the décolleté. The skin appears plumper and revitalised.

High Performance Skin Energiser for Men

This is the hard-working facial for ageing, stressed, dehydrated skin and tired eyes. An energising treatment that speaks to every skin concern, restoring vital moisture and nutrient levels. Multi-dynamic facial massage sequences boost circulation, whilst a targeted scalp and foot massage will deeply relax.

Couture Touch

55 minutes £95 / 115 minutes £185

Combine any 25 or 55 minute ELEMIS hands on facial with a 25 or 55 minute Freestyle Deep Tissue or Hot Stone Massage.
(must be selected at time of booking)



Body Treatments

Freestyle Deep Tissue Massage

25 minutes £70 / 55 minutes £100 / 85 minutes £130

A firm pressure massage which is tailored entirely to your needs, leaving you feeling grounded and focused. This is a vigorous workout for the body, perfect to alleviate high stress levels.

Hot Stone Massage

25 minutes £70 / 55 minutes £95

Balinese stones are worked over the body, deep into the muscles, getting into areas of tension at a profound level, persuading the muscles to release their trapped energy.

The result is sparkling vitality with the added bonus of intensely hydrated skin.

Freestyle Swedish Massage

25 minutes £65 / 55 minutes £95 / 85 minutes £125

A tailored massage designed to release tension and stress. The therapist will adapt the pressure to help sweep you off to the land of eased muscles and calm thoughts.

We'll knuckle those knots and tease out those tensions too.

Back and Scalp Massage

45 minutes £80

Tension and stress will be relieved as the therapist will only concentrate on the back and scalp.

You will feel totally relaxed.

Head Start Massage

25 minutes £65

This is a blissful massage on the scalp. Oil is an option as it will give the hair some nourishment.

Leave in the hair for the ultimate shine.

Intensely Cleansing Salt Scrub

25 minutes £65

The extraordinary cleansing power of salt goes to work releasing toxins in this body polishing treatment.

The salt will gently slough away dead skin cells, encouraging the regeneration of new cells and perfectly prepping the skin. It leaves a smooth and responsive canvas, ready to absorb the deeply nourishing body oil, delivering velvety soft and invigorated skin.

Peaceful Pregnancy Massage

25 minutes £65 / 55 minutes £95

This unique pregnancy massage is a profoundly nurturing and tranquil oasis. An intuitive, sensitive and relaxing massage hydrates and moisturises skin that is expanding to accommodate a growing baby. Only

nurturing aromatics and essential oils are imparted – along with wisdom, empathy and respect.

Finishing Touches

Express Manicure £31

Nails are beautifully filed to your perfect shape and finished with nail polish.

Luxury Manicure £47

A Jessica Manicure with the luxurious added benefits of Thermal Heated Mittens for deeper penetration of oils and creams. Hands and cuticles are conditioned and moisturised. Nails are beautifully shaped and finished with nail polish.

Eye Brow Wax £12

Eye Brow Tint £15

Eye lash Tint £28

Lip Wax £12

Chin Wax £12

Express Pedicure £31

Nails are beautifully filed to your perfect shape and finished with nail polish.

Luxury Pedicure £47

Hard skin is removed, feet and legs are massaged with conditioning creams and Thermal Heated Booties for deeper penetration of oils and creams. Cuticles are groomed & toe nails are shaped and perfectly polished.

Under Arm Wax £15

Half Leg Wax £25

Full Leg Wax £30

ELEMIS Face - Technology

BIOTEC facial treatments are where ground-breaking technology meets active ingredients and transformative touch. The pioneering innovation of the BIOTEC machine, works to switch the skin back on, increasing its natural cellular energy.

All treatments 25 minutes £65 / 55 minutes £100

BIOTEC Radiance Renew

This cellular-boosting treatment, targets dull, tired and sluggish complexions.

BIOTEC Blemish Control

A deep cleansing facial that detoxifies the skin and repairs damaged tissue.

BIOTEC Sensitive Skin Soother

The anti-redness treatment that calms and soothes sensitive skin.

BIOTEC Super-Charger for Men

This is the facial to de-stress, de-age and de-fatigue the male complexion while activating ultimate skin dynamism.

BIOTEC Line Eraser

A powerfully rejuvenating facial treatment that targets wrinkles.

BIOTEC Firm-a-Lift

A ground breaking blend of massage and sculpting technology for a contoured complexion.

BIOTEC Anti-Pigment Brightener

This treatment tackles the appearance of uneven skin tone, discoloration and age spots.

BIOTEC Skin Resurfacer

This resurfacing facial addresses skin tone, blemishes and fine lines to transform the texture of the skin.





ELLENBOROUGH PARK



www.ellenboroughpark.com/spa

spa@ellenboroughpark.com

Southam Lane, Cheltenham, GL52 3NJ

01242 545426